

TECHNICAL DATA

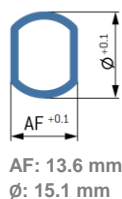
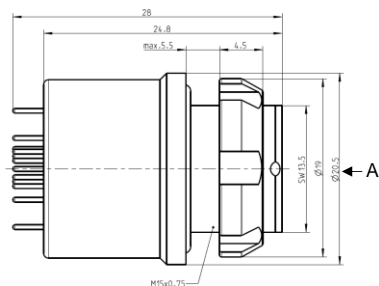
ODU MINI-SNAP®

PART NUMBER

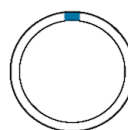
G82L0Q-P16QC00-00V0

Type of connector	Receptacle for rear panel installation
Orientation	Straight
Number of contacts	16
Contact type	Socket
Termination of contact	Print
Contact diameter	0.5 mm
Termination diameter	0.5 mm
Nominal current (single contact / insert)	4.2 / 2.1 A
Nominal voltage acc. to IEC 60664	32 V AC
Mechanical coding	0°

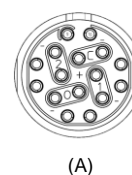
DIMENSIONS



Coding: 0°



Positions: 16



TECHNICAL INFORMATION

ENVIRONMENTAL

Degree of protection	IP 50 in mated condition ¹ IP 68 in unmated condition
He leakage rate	< 1 x 10 ⁻⁸ mbar l/s (tested at < 10 ⁻⁹ mbar l/s) acc. to DIN EN 60512-14-2:2006
Operating temperature range	-20°C to +120°C
Mating cycles	5000
Durability	Autoclavable (500 autoclaving cycles, according to DIN EN 13060:2015)

MATERIAL DESIGNATION

Housing material / surface	Aluminum / chrome-plated
Plating material (contact)	Au
Sealing	FKM
Insulator Material	Glass, PEEK

CHOOSE MATING PLUG

S12L0C-P16MCD0-__00
S22L0C-P16MCD0-__0S
W12L0C-P16MCD0-__00²
W22L0C-P16MCD0-__0S²
A12L0C-P16MCD0-__00²
A22L0C-P16MCD0-__0S²

¹ IP50: With proper ODU MINI-SNAP Push-Pull and Break Away Plugs

² Support of HDMI®2.0 depends on the respective application. For further information please contact zentral@odu.de

Demand of special surface roughness and special pin layout, more information up on request

TECHNICAL DATA

ODU MINI-SNAP[®]

PART NUMBER:

G82L0Q-P16QC00-00V0

Number of contacts		Contact type	He leakage rate according to DIN EN 60512-14-2:2006	Insulator material	Data transfer protocol	Data transfer rate	Nominal current (single contact / insert)	Nominal voltage acc. to IEC 60664
1	6	socket	$1 < 10^{-8}$ mbar l/s	glass + PEEK	HDMI [®]	14,4 Gbit/s	4,2 / 2,1 A	32 V AC